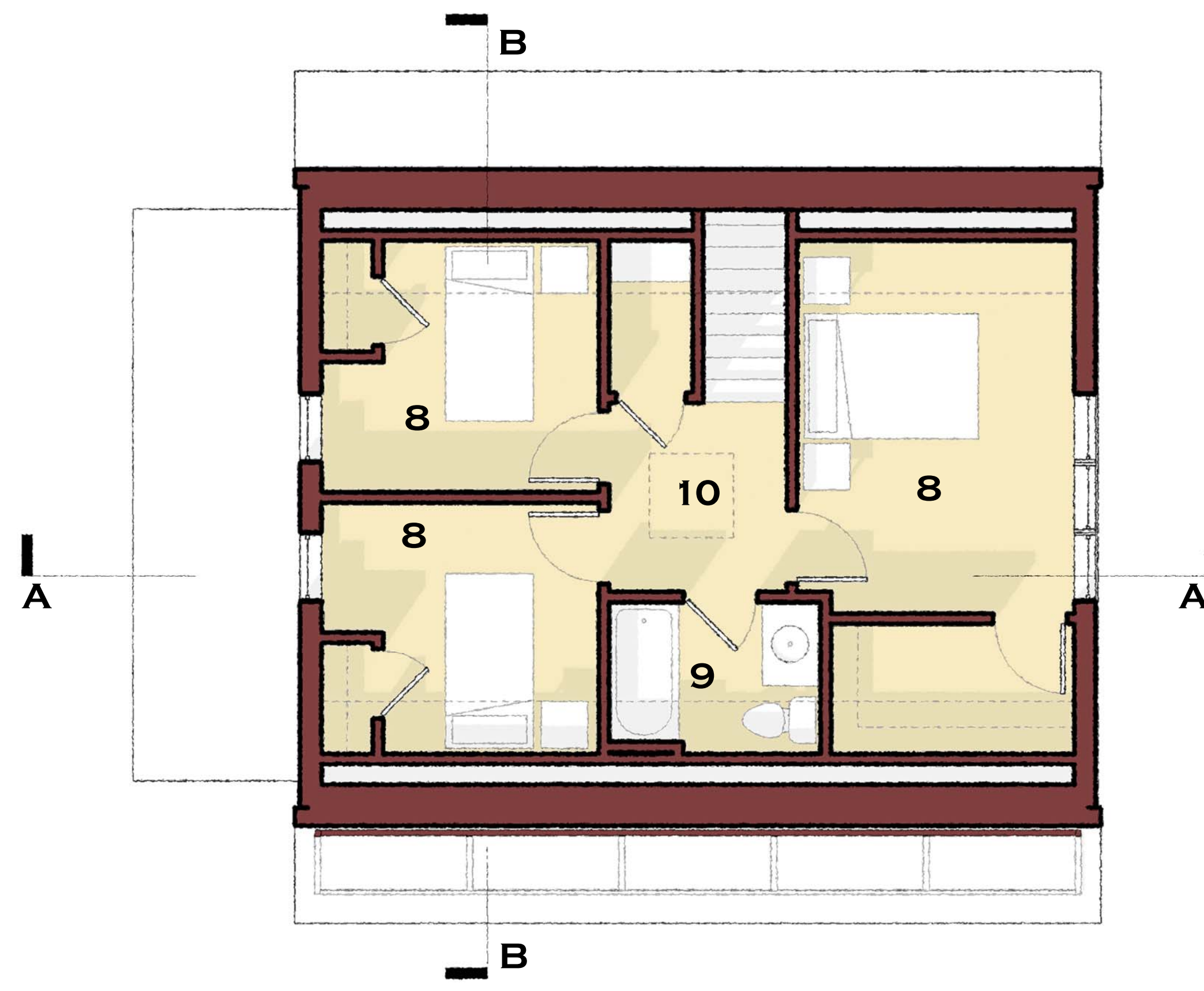


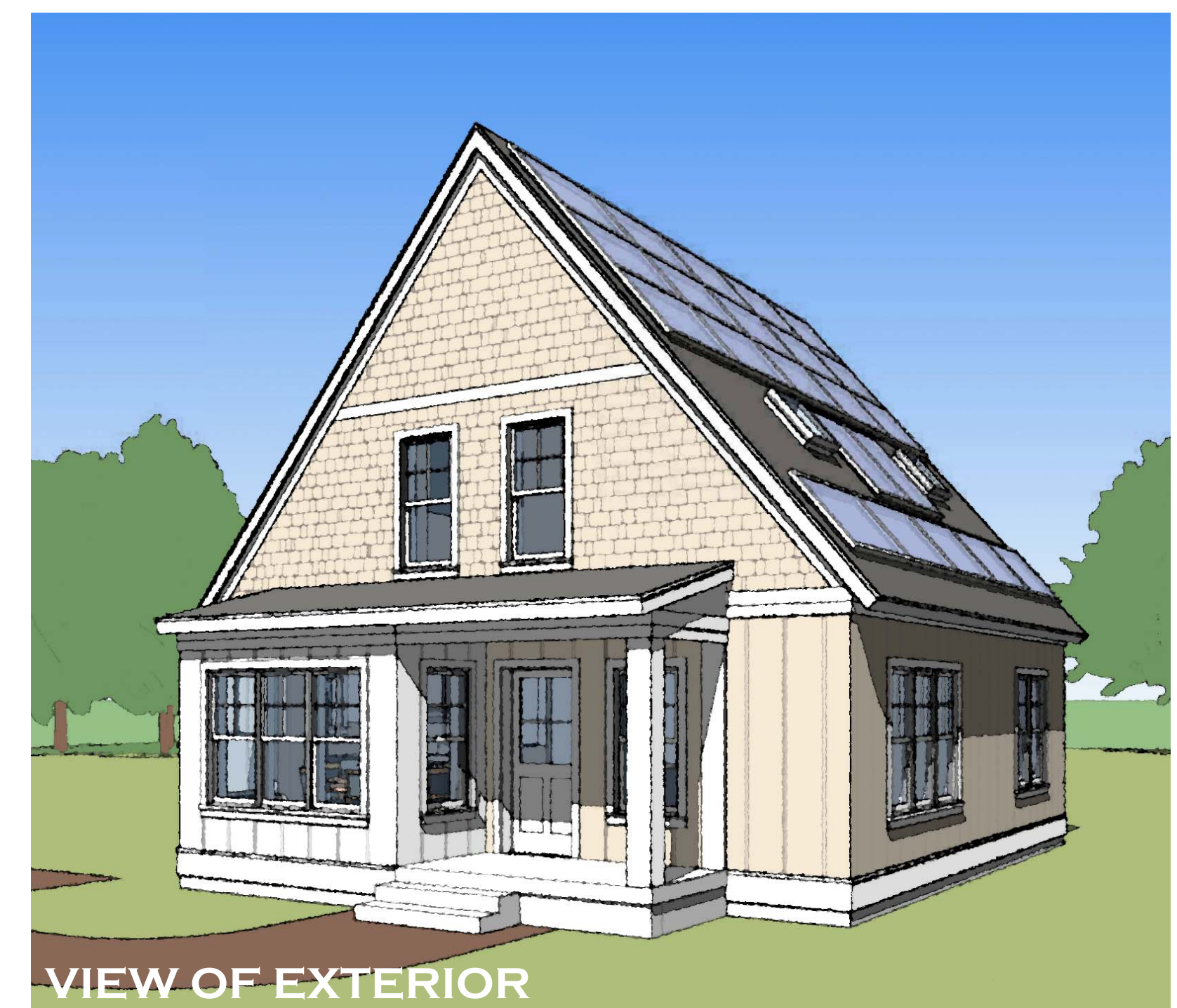
**FOUR BEDROOM - NO BASEMENT**

**FIRST FLOOR: 781 SQ. FT. NET**  
**SECOND FLOOR: 497 SQ. FT. NET**  
**TOTAL: 1278 SQ. FT. NET**

1. COVERED PORCH FLUSH WITH FIRST FLOOR (ENTRY MAY BE MADE FULLY ACCESSIBLE VIA A 1:20 SLOPED PATH OR A RAMP)
2. KITCHEN WITH EATING AREA
3. LIVING ROOM
4. ACCESSIBLE BEDROOM
5. ACCESSIBLE BATH
6. LAUNDRY
7. GAS POINT SOURCE HEATER
8. BEDROOM
9. BATH
10. ACCESS TO ATTIC STORAGE ABOVE
11. OPTIONAL SKYLIGHTS
12. OPTIONAL 4.4 Kw PHOTOVOLTAIC PANEL ARRAY
13. OPTIONAL SOLAR HOT WATER PANELS
14. UNFINISHED INSULATED ATTIC FOR STORAGE AND ON DEMAND WATER HEATER.
15. OPTIONAL UNFINISHED EAVE STORAGE
16. CRAWL SPACE ACCESSED BY AN EXTERIOR HATCHWAY OR INTERIOR FLOOR ACCESS PANEL



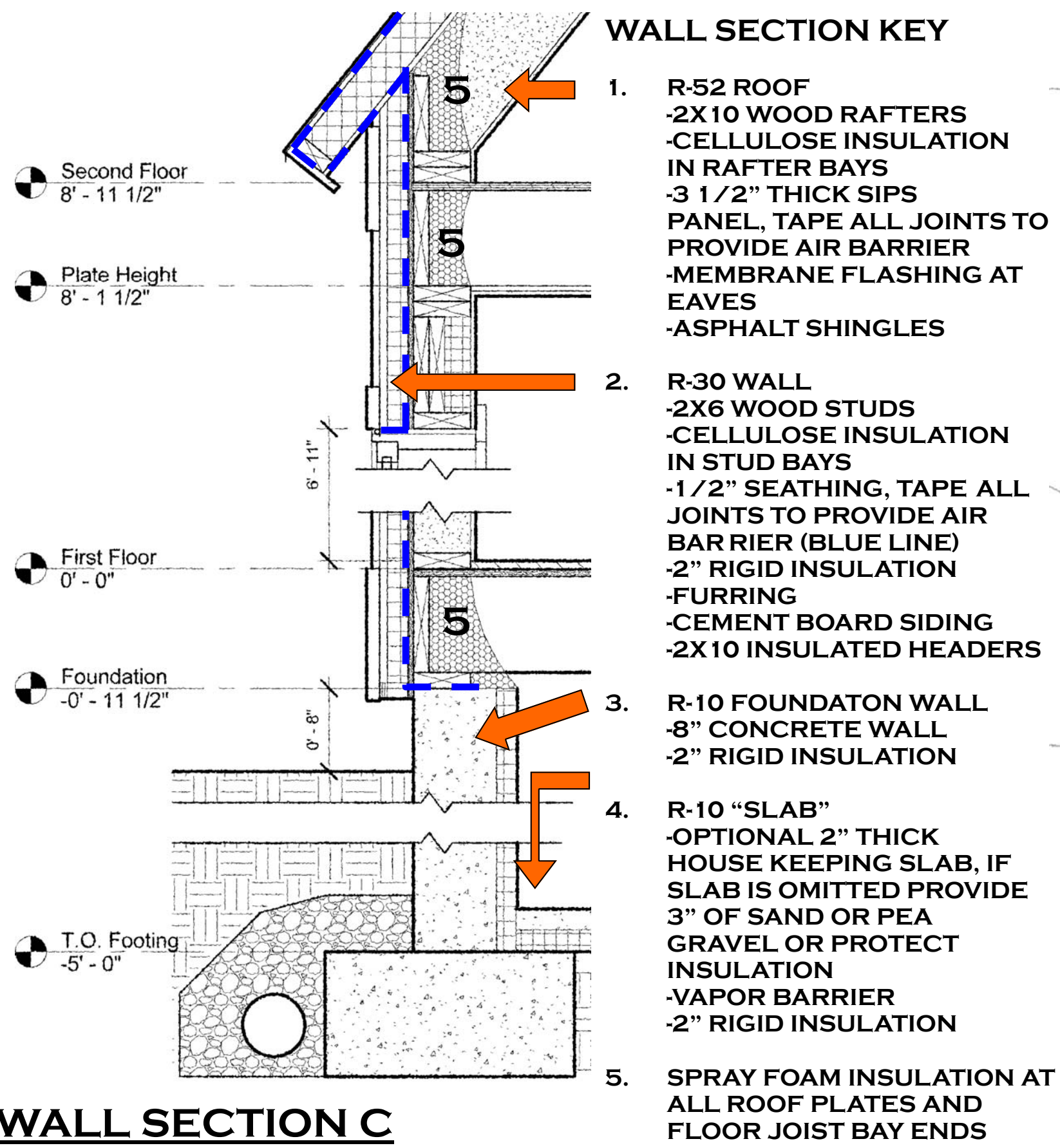
**SECOND FLOOR**  
1/4" = 1'-0"



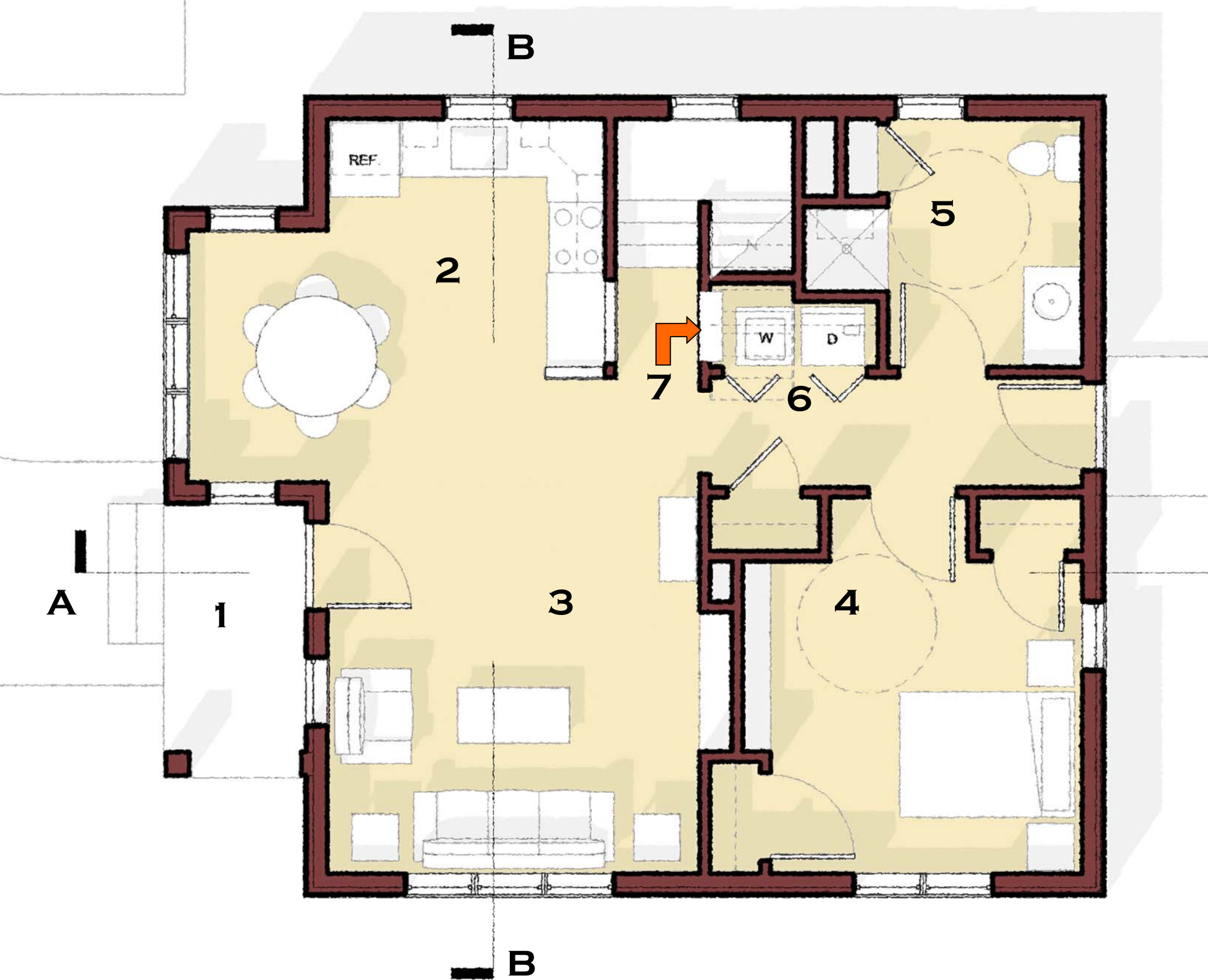
VIEW OF EXTERIOR



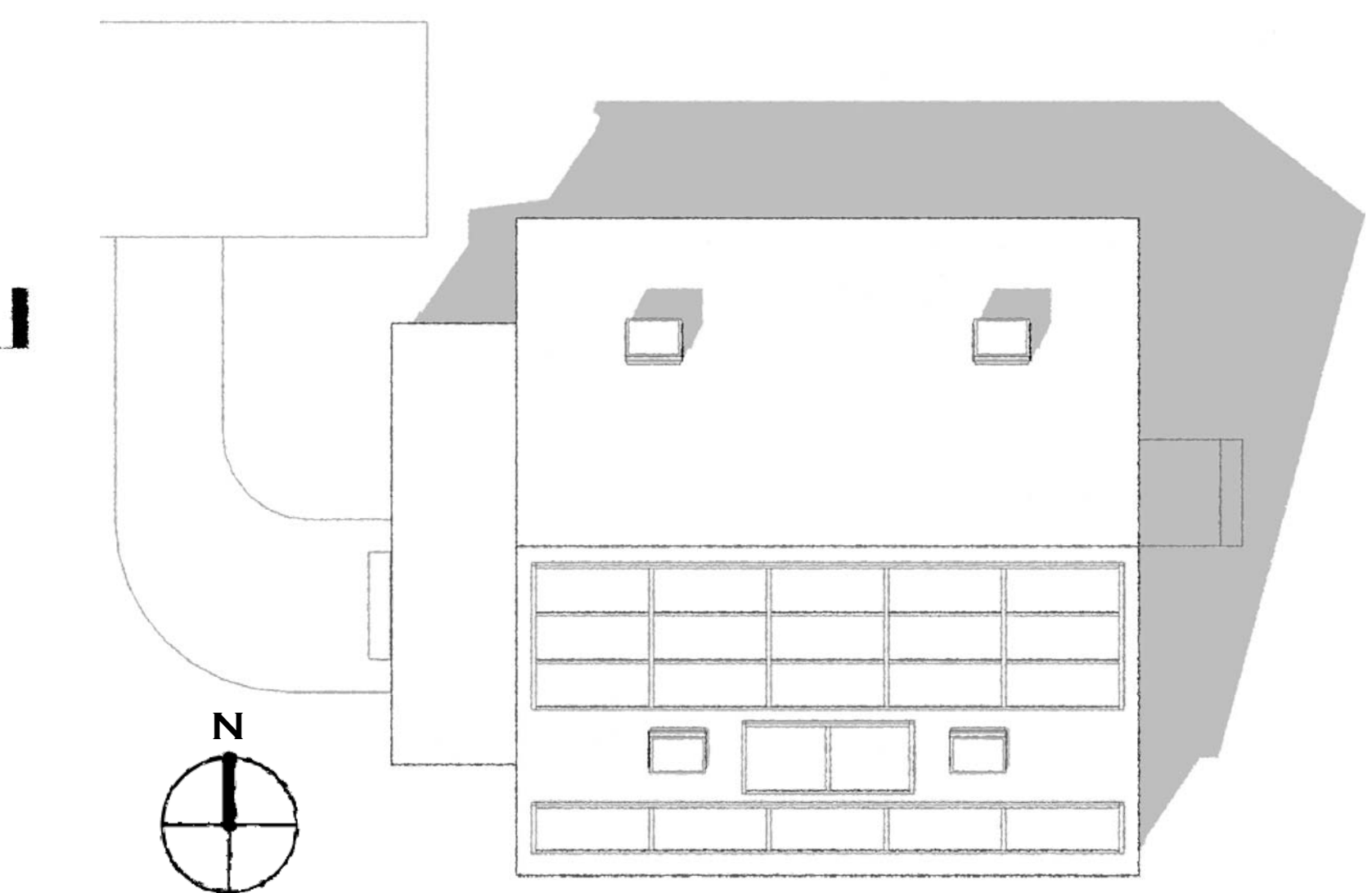
VIEW OF KITCHEN FROM LIVING ROOM



**WALL SECTION C**  
1" = 1'-0"



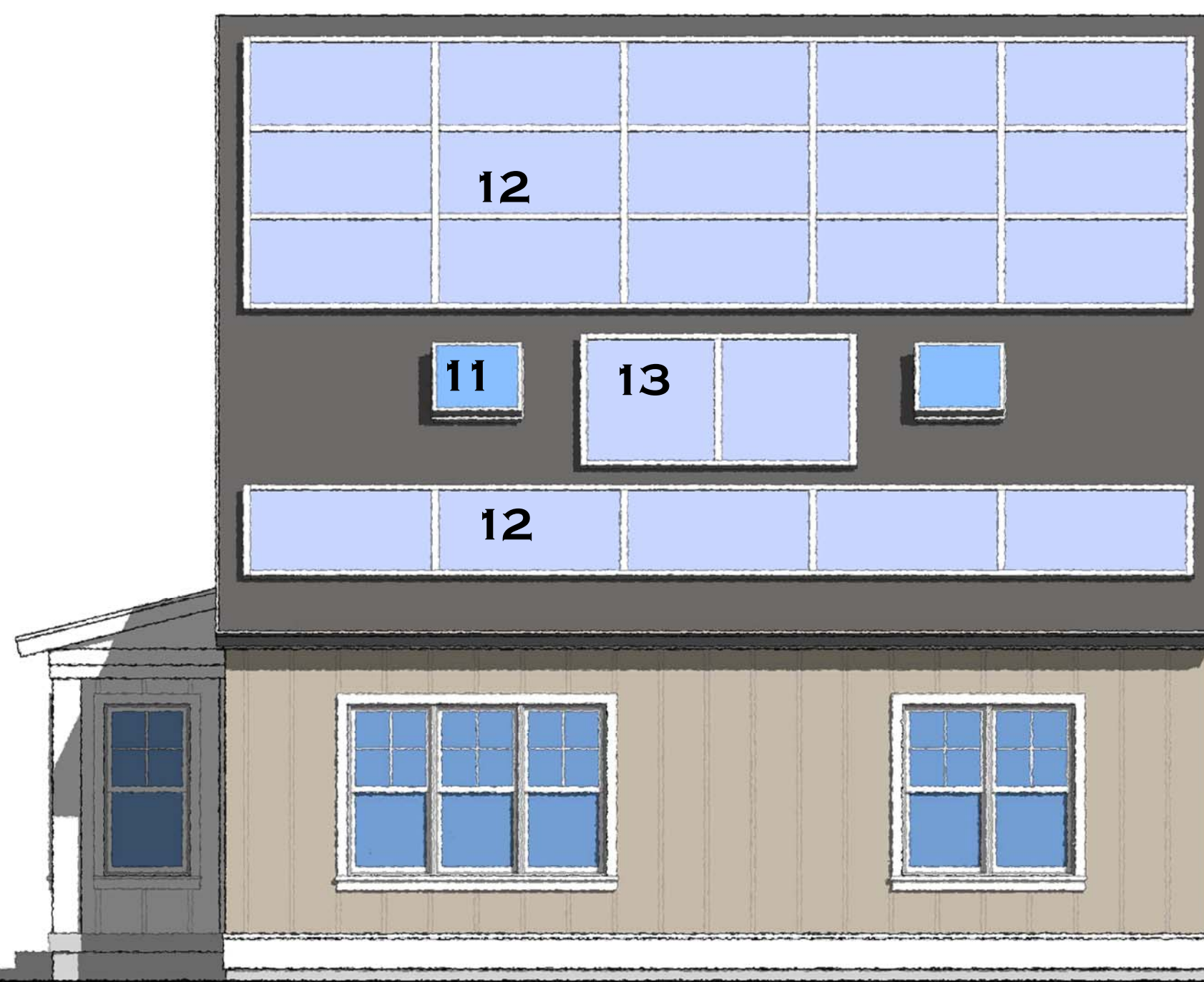
**FIRST FLOOR**  
1/4" = 1'-0"



**ROOF/SITE PLAN**  
1/8" = 1'-0"



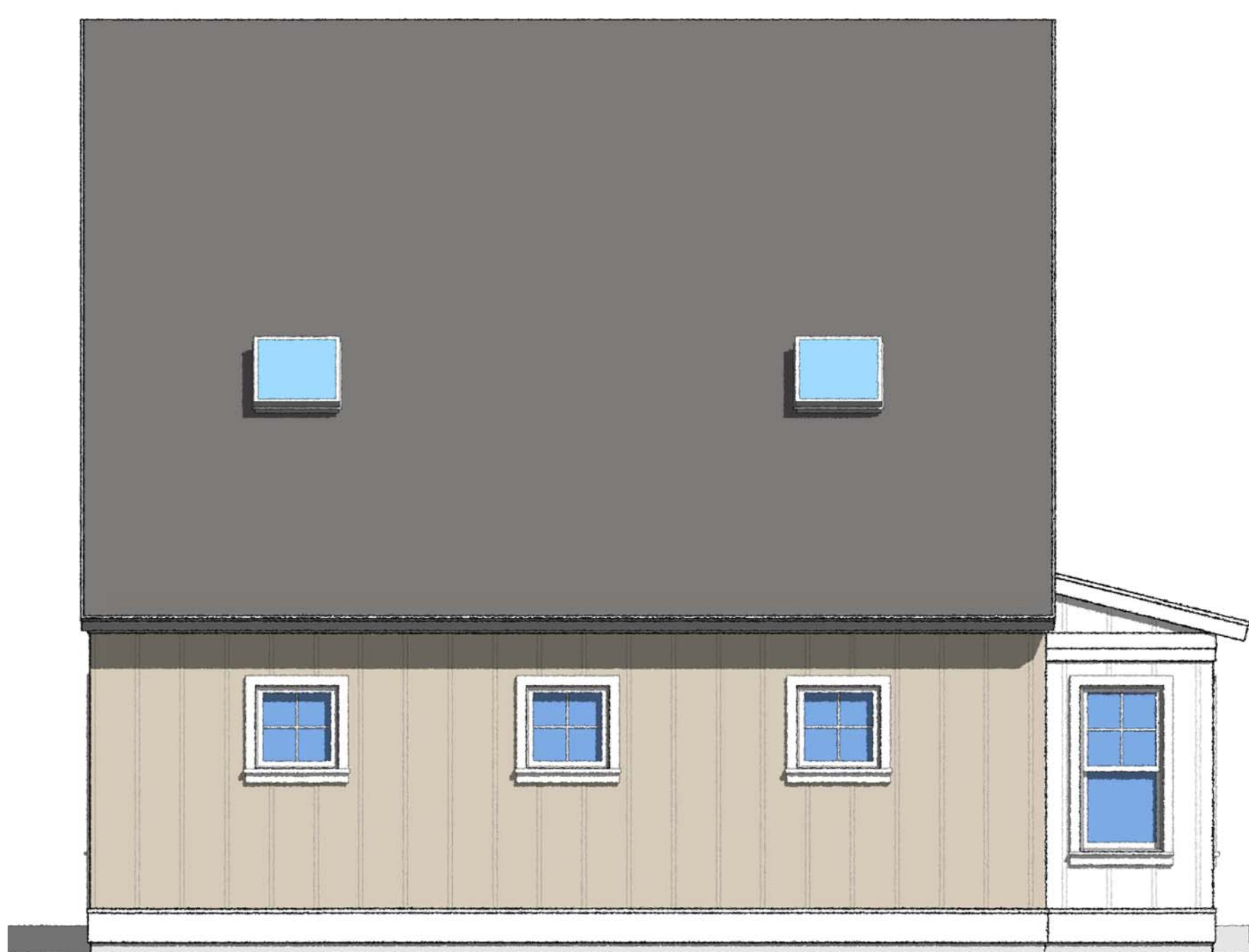
**STREET ELEVATION**  
1/4" = 1'-0"



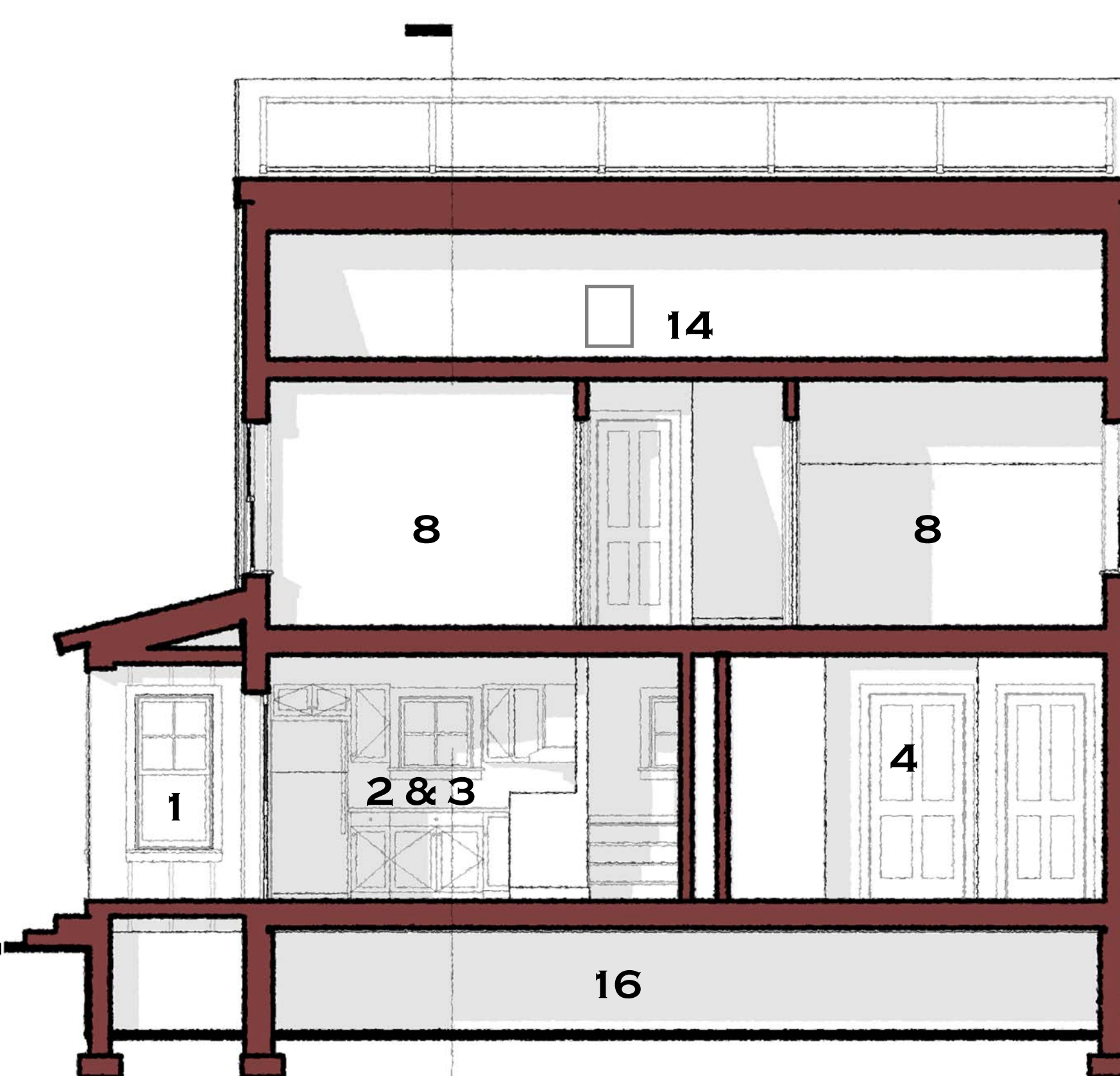
**RIGHT ELEVATION (ASSUMED SOUTH)**  
1/4" = 1'-0"



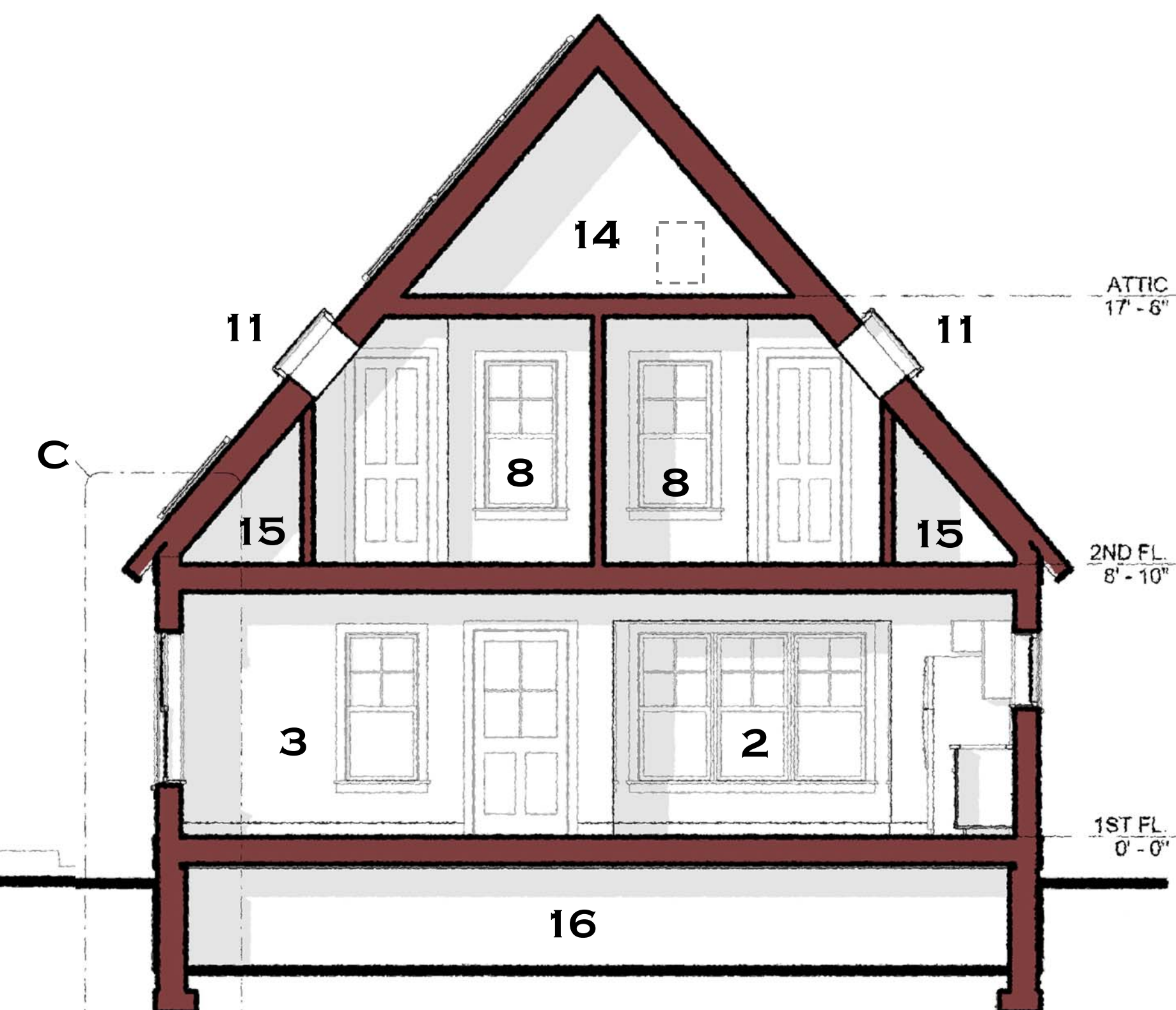
**REAR ELEVATION**  
1/4" = 1'-0"



**LEFT ELEVATION**  
1/4" = 1'-0"



**SECTION A**  
1/4" = 1'-0"



**SECTION B**  
1/4" = 1'-0"